

אוסף עזרא אוריון
ארכיון אמנות במרחב הציבורי
Ezra Orion Collection
Public Art Archive

כותרת: שדה פסלים, מגזין Landscape Architecture יולי 1971 עמודים 283, 307-311
גזרי עיתון

מיקום בארכיון

ארגז: 4

תיק: 4

תת תיק: 4

Title: Sculpture Field, Landscape Architecture magazine, July 1971 p.283, 307-311
News clips

Location in Archive

Box: 4

Folder: 4

Sub folder: 4

המכון לנוכחות ציבורית
המרכז הישראלי לאמנות דיגיטלית, חולון
לחומרי המקור צרו קשר דרך archive@digitalartlab.org.il

The Institute for Public Presence
The Israeli Center for Digital Art, Holon
For original materials please contact us at archive@digitalartlab.org.il



LANDSCAPE ARCHITECTURE

July
1971

LANDSCAPE SCULPTURE

אוסף עזרא אוריון

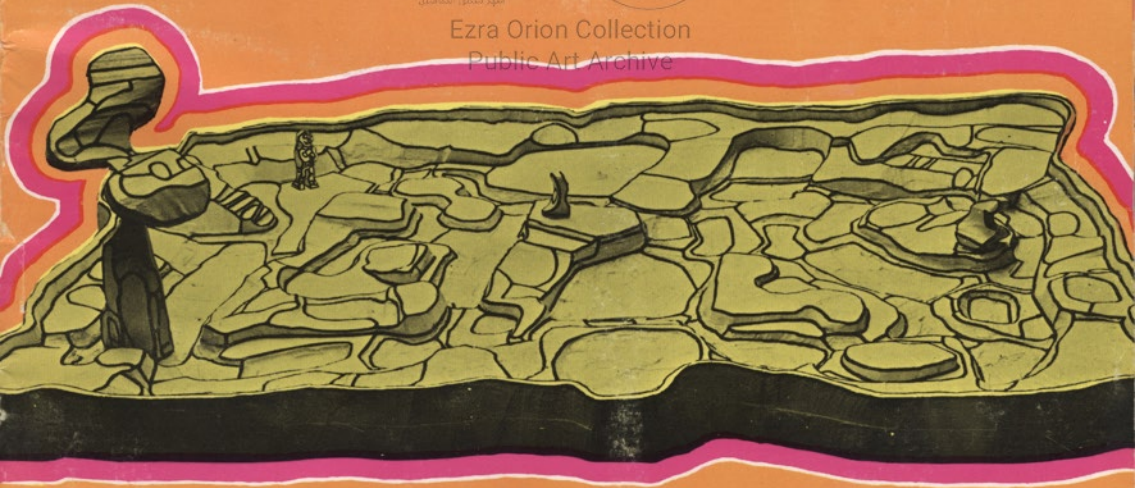
ארכיון אמנות במרחב הציבורי

IPQ

מרכז תוכנית עירונית
מחלקת תכנון עירוני
משרד התכנון והבנייה



Ezra Orion Collection
Public Art Archive





PRUNUS serrulata "Amanogawa"



MALUS "Hopa"



CARPINUS betulus "Fastigiata"



ACER platanoides "Emerald Queen"



PRUNUS serrulata "Akebono"

Now you can design with a difference.

Chances are good that the trees you need for special effects can be found in the Davey Tree Nursery. Not only the proved old reliables, but hard-to-find specimens, too.

The Davey Tree Nursery has substantial quantities of more than 150 varieties of shade and ornamental trees, many of them patented and registered. We have good-sized blocks of matched shade trees with four- and five-inch trunks and full crowns, tens of thousands of smaller sizes.

We'll transport our trees any distance, plant them where you specify, and plant them right. We also have the experience and ability to implement your complete landscaping plan, including shrubs, flowers, and lawn - with follow-up maintenance if you like.

You should know more about the Davey Tree Nursery. Why not stop in the next time you're near Wooster, Ohio, and look around? If you can't make it in

person, call 216-264-3533 for up-to-date prices and availabilities. Or send in the coupon below.



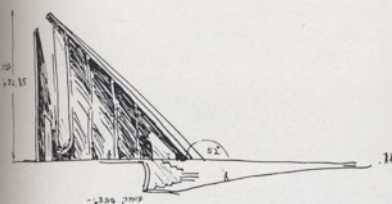
DAVEY TREE NURSERY
State Route 539
Wooster, Ohio 44691
Please send me the Davey Tree
Nursery Catalog.

NAME _____
COMPANY _____
ADDRESS _____
CITY _____
STATE _____ ZIP _____

DAVEY TREE

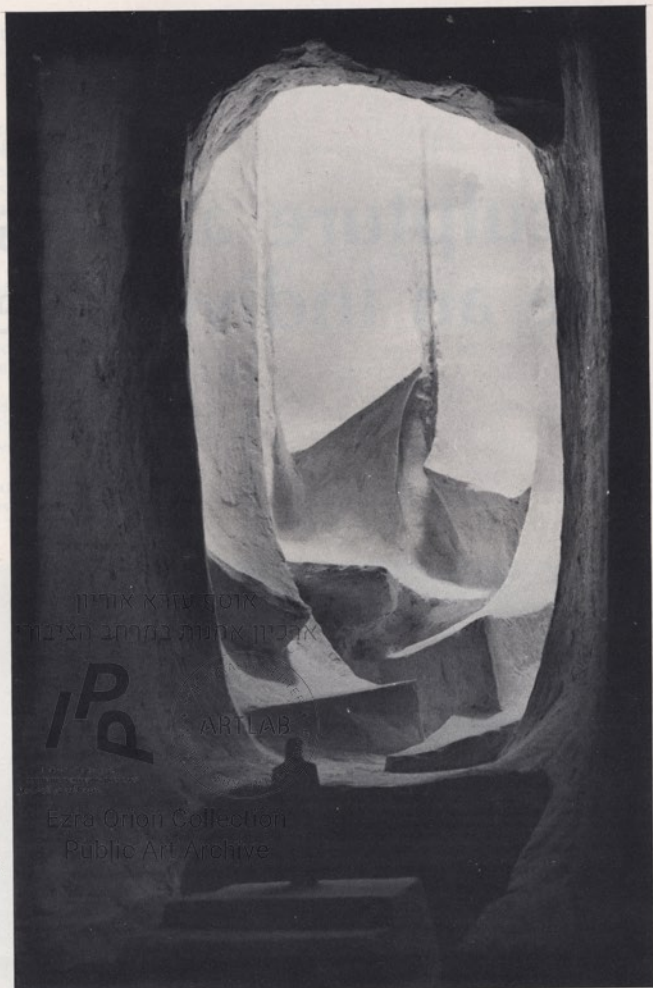
KENT, OHIO 44240
Coast to Coast and Canada





האלקטט האנכי השמאלי : תחכים

Profile, above, and interior of main structure, right; 32.85 metres in height.



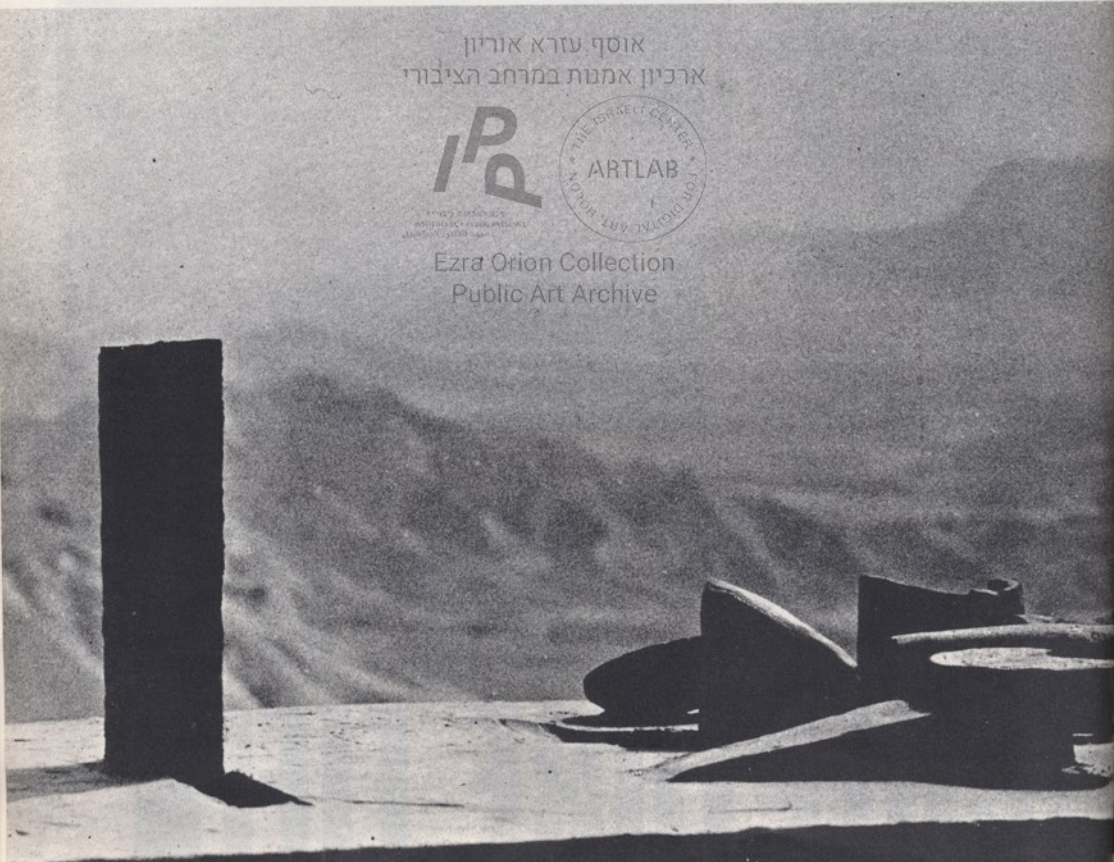
שדה פסלים SCULPTURE FIELD

**"Sculpture and its space
are an indivisible unit."**

אוסף עזרא אוריון
ארכיון אמנות במרחב הציבורי



Ezra Orion Collection
Public Art Archive



On the Road to Beer Sheba, Israel

"Total Sculpture should elevate people as far as possible from their daily experience," says Israeli-sculptor Ezra Orion, who is responsible for the design of a remarkable projected work of total sculpture on a remote mountainous site near the College of the Negev.

This huge "sculpture field" at Sdeh Boker is to be seen from the road between Eliat and Beer Sheba, an hour's drive from the last desert town, and visible over a two-mile approach. This community of huge forms is designed to appear on top of a high flat plateau dominating the desert (see map). Visitors will leave their cars in an underground parking lot and walk 400 yards to the sculpture field.

"Sculpture has to select its setting," says Orion. "It has to select its area, region, landscape. Landscape has to complete, support, and strengthen sculpture. Not a city. An empty desert. Stone mountains stretching into the distance.

"Sculpture has to exist in terms of geological time. Like mountains, slopes, plains. Made out of materials that will stand against time.

"Sculpture and its place are an indivisible unit. Here earth is bound to sculpture. The unit of 'wall-and-pit' emerges. Sculpture bursts into the ground. Downward sculpture. Underground sculpture."

Orion's projected work, which sculptor Henry Moore has called "imaginative and inspiring," is designed as

